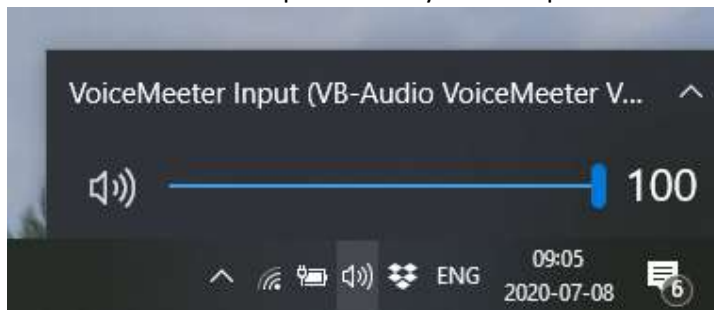
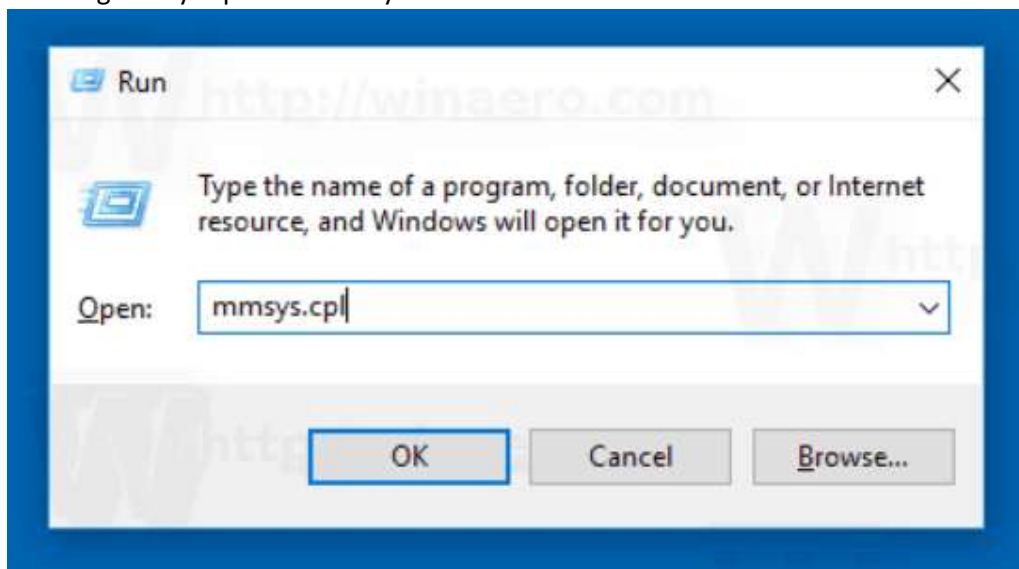


In this tutorial, we will use the Host Element Free to run the Dirac Live Processor together with Voice Meeter Banana for multichannel processing on Windows by doing the following steps:

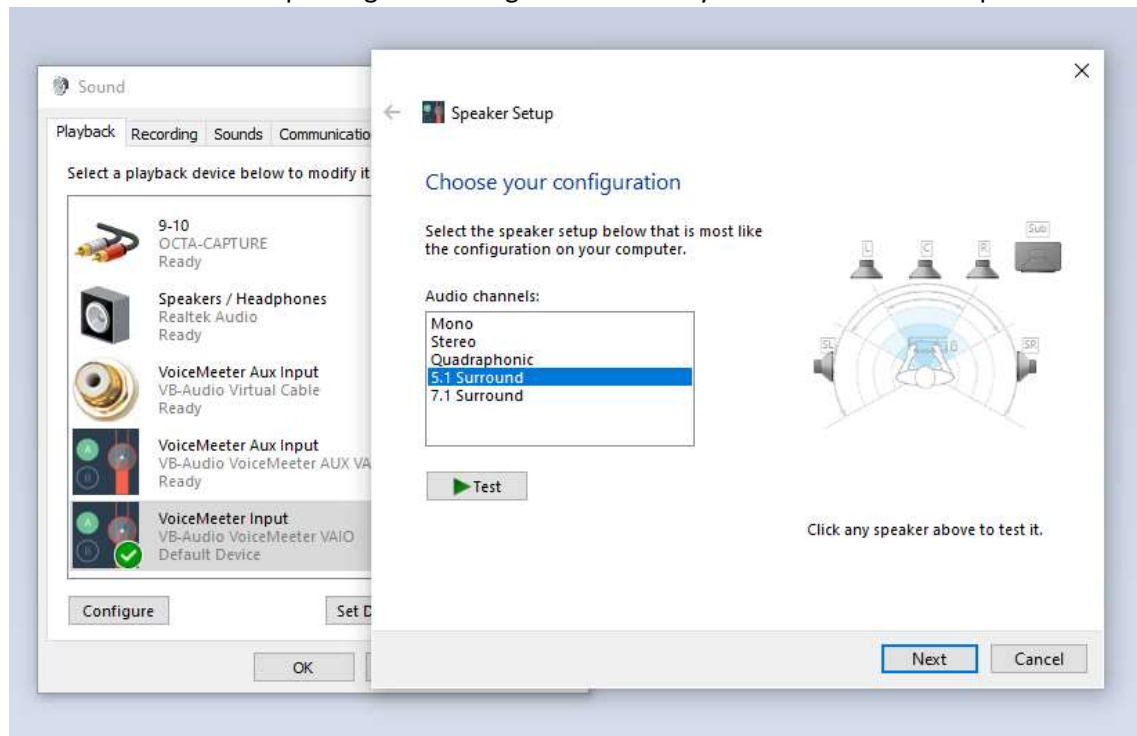
- Download and install Element
<https://kushview.net/free-vst-host/>
The free version is found on their GitHub, v0.40.0 can be downloaded here:
<https://github.com/kushview/Element/releases/tag/0.40.0>
- Download and install Voice Meeter Banana
<https://www.vb-audio.com/Voicemeeter/banana.htm>
- Download and install Dirac Live Processor
<https://live.dirac.com/download/>
- Select Voice Meeter input as the system output



- Open windows sound settings, This is done easiest by typing Windows+r and entering mmsys.cpl followed by enter.



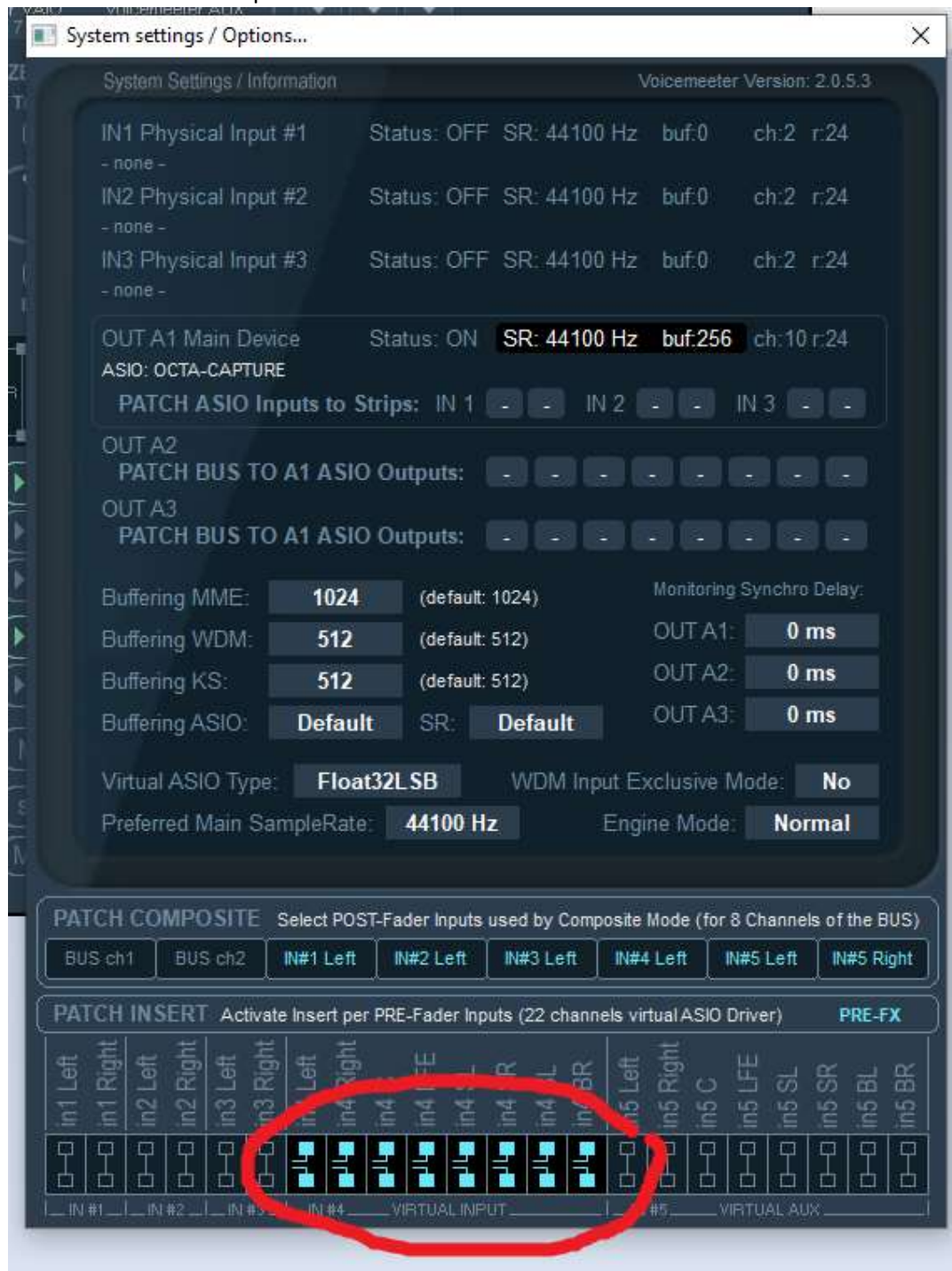
- Select Voice Meeter Input and click configure and select your multichannel setup



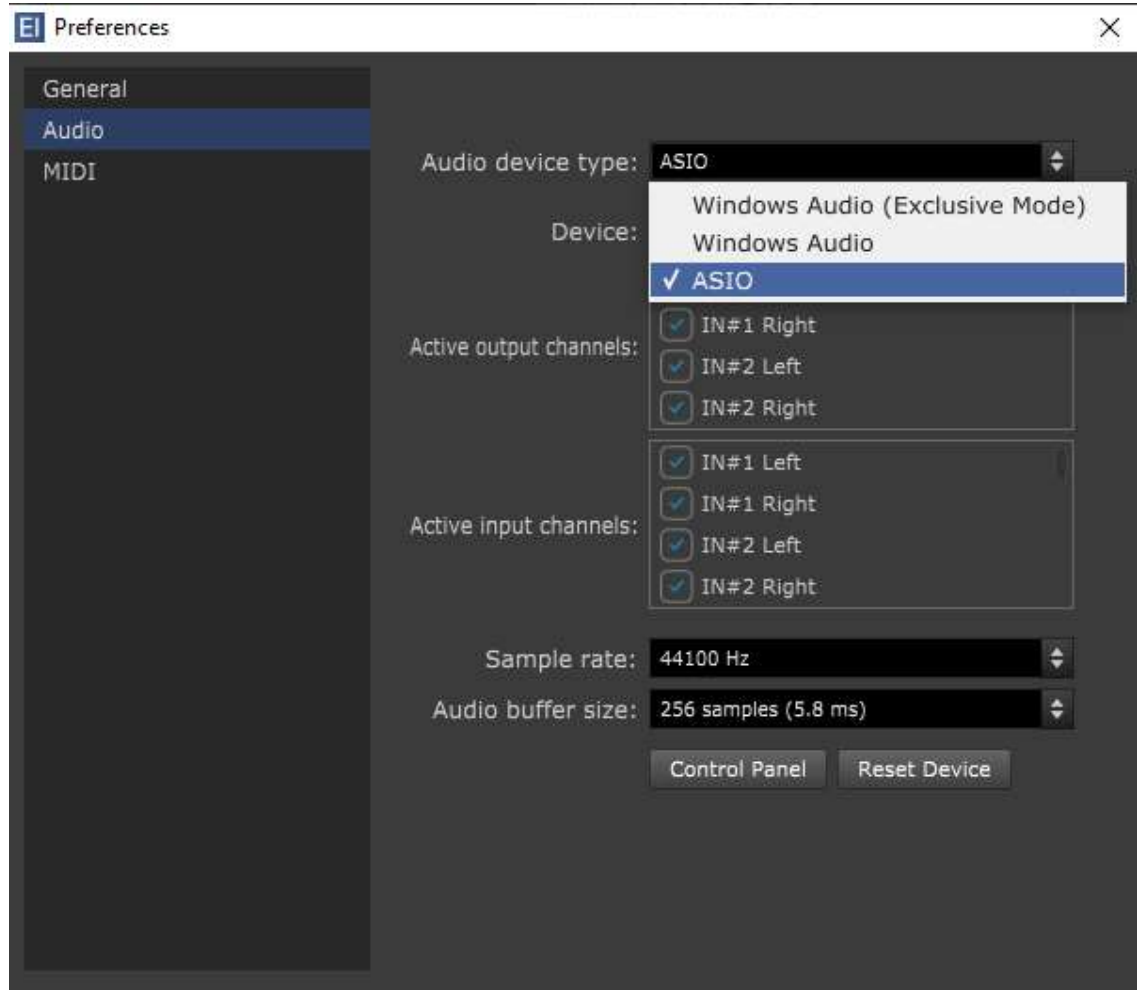
- Open Voice Meeter Banana and select your soundcard as output A1 (Use ASIO driver)



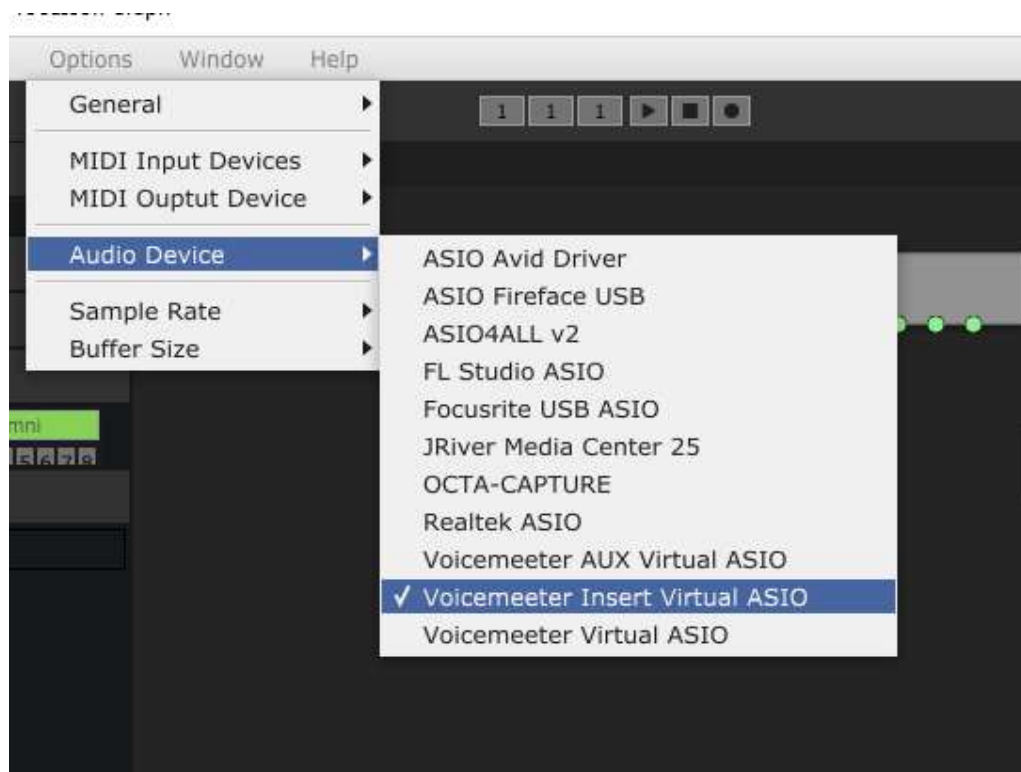
- In Voice Meeter Banana go to menu->System Settings/Options... And activate the Insert for the virtual input



- Open Element and change driver to ASIO
File->Preferences... Audio device type: ASIO



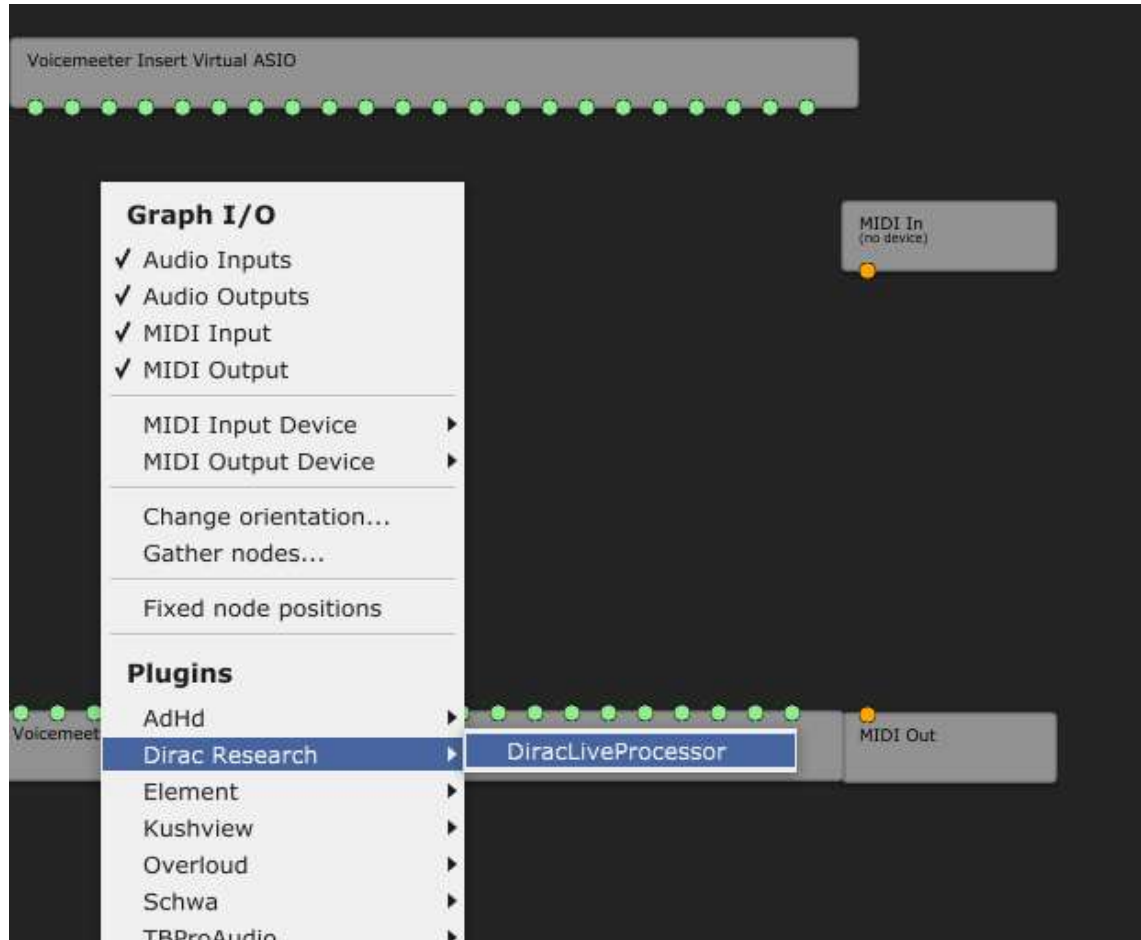
- In Element and select Voicemeeter Insert as the audio driver: Options->Audio Device->Voicemeeter Insert Virtual ASIO



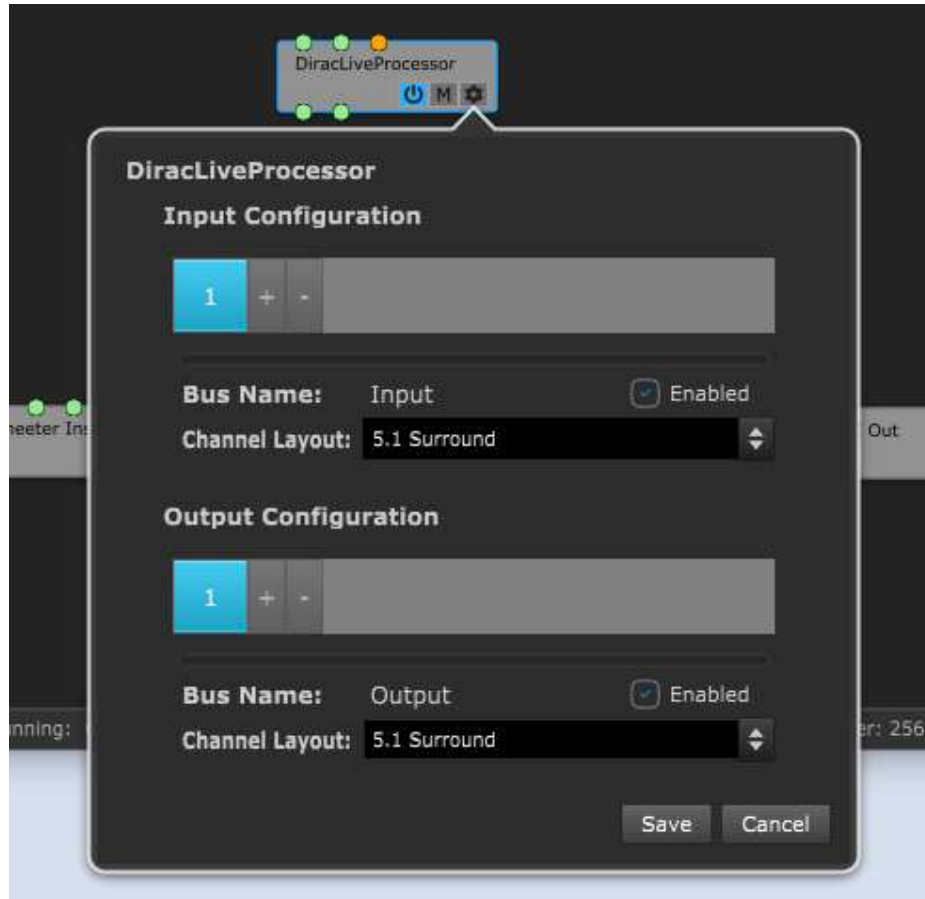
- In Element go to View->Plugin Manager and click scan and make sure Dirac Live Processor is in the list

Name	Format	Category	Manufacturer	Description
AllPass Filter (mono)	Element	Effect	Element	
AllPass Filter (stereo)	Element	Effect	Element	
Audio File Player	Element	-	Element	A single audio file p
Audio Mixer	Element	Mixer	Element	Simple 4 track mixe
Audio Router	Element	-	Element	An Audio Patch Grid
Comb Filter (mono)	Element	Effect	Element	
Comb Filter (stereo)	Element	Effect	Element	
DiracLiveProcessor	VST3	Fx	Dirac Research	1.3.5
Element	VST3	Instrument Synth	Kushview	1.41.1
Element FX	VST3	Fx	Kushview	1.41.1
Elephant	VST3	Fx Mastering	Voxengo	4.10
eVerb	Element	-	Element	Simple Reverb - 1.0
Graph	Element	Utility	Element	A nested graph - 0.
ISOL8	VST3	Fx EQ	TBProAudio	2.0.2
Leveling Tool	VST3	Fx Dynamics	AdHd	1.3.3
Media Player	Element	-	Element	element.mediaPlay

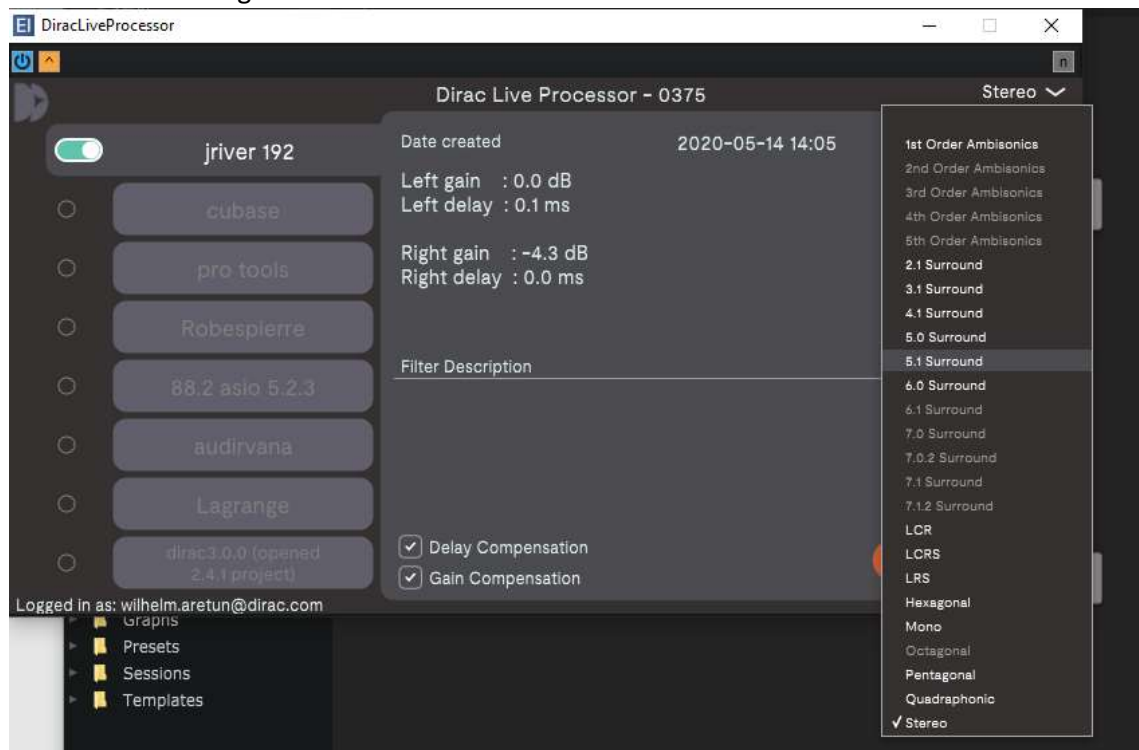
- Go to View->Graph Editor right click and insert DiracLiveProcessor



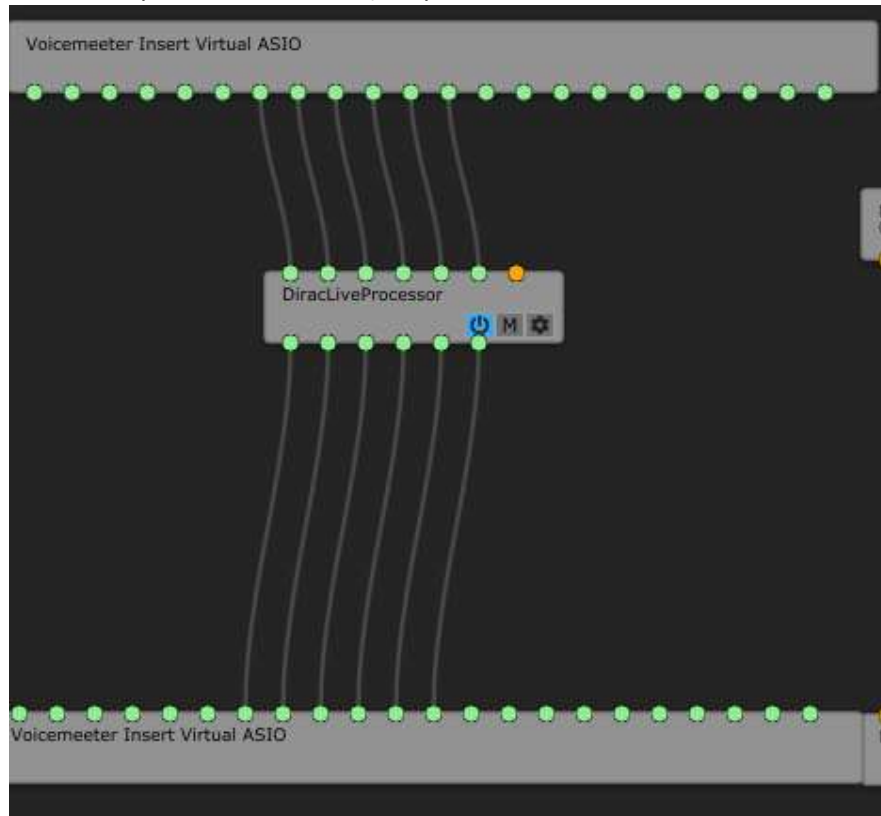
- Close the Dirac Live Processor User Interface and click on the cogwheel and choose your multichannel configuration (it needs to be the same in input and output) then click save.



- Double click DiracLiveProcessor box to open the User Interface and select your multichannel configuration



- Connect the pins between the insert and Dirac Live Processor by dragging the wires, start from pin number seven (the pins 7-14 is the Voice Meeter Banana virtual input)



You have now setup the Voice Meeter Banana together with Dirac Live processor and the VST host Element. You are now ready to perform a measurement and create your first filters. You should now proceed according the Step by Step instructions found at <https://live.dirac.com/processor-step-by-step/> and continue from “Install and set up the Dirac Live calibration tool”